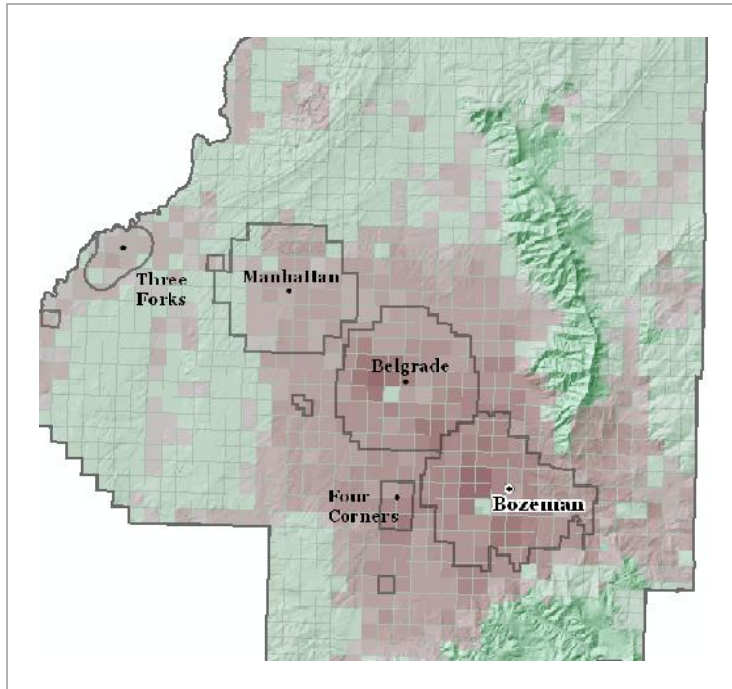


Allocator

Places new buildings on the landscape according to rules of supply and demand.

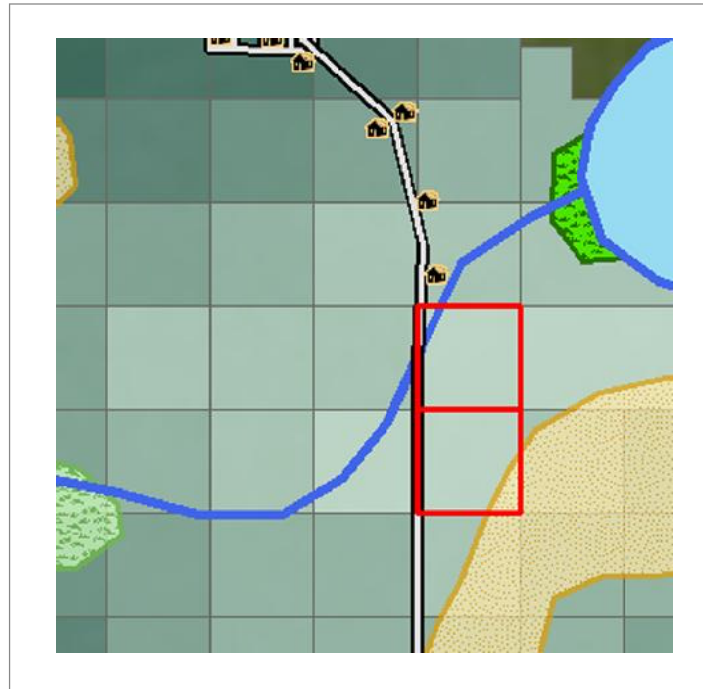
The Allocator model helps determine where growth is most likely to occur over time. It uses the classic supply-and-demand approach, allocating new growth to available building locations sequentially over time, using either strict-order or probability-based models.



Optimizer

Chooses the best combination of features to meet certain goals.

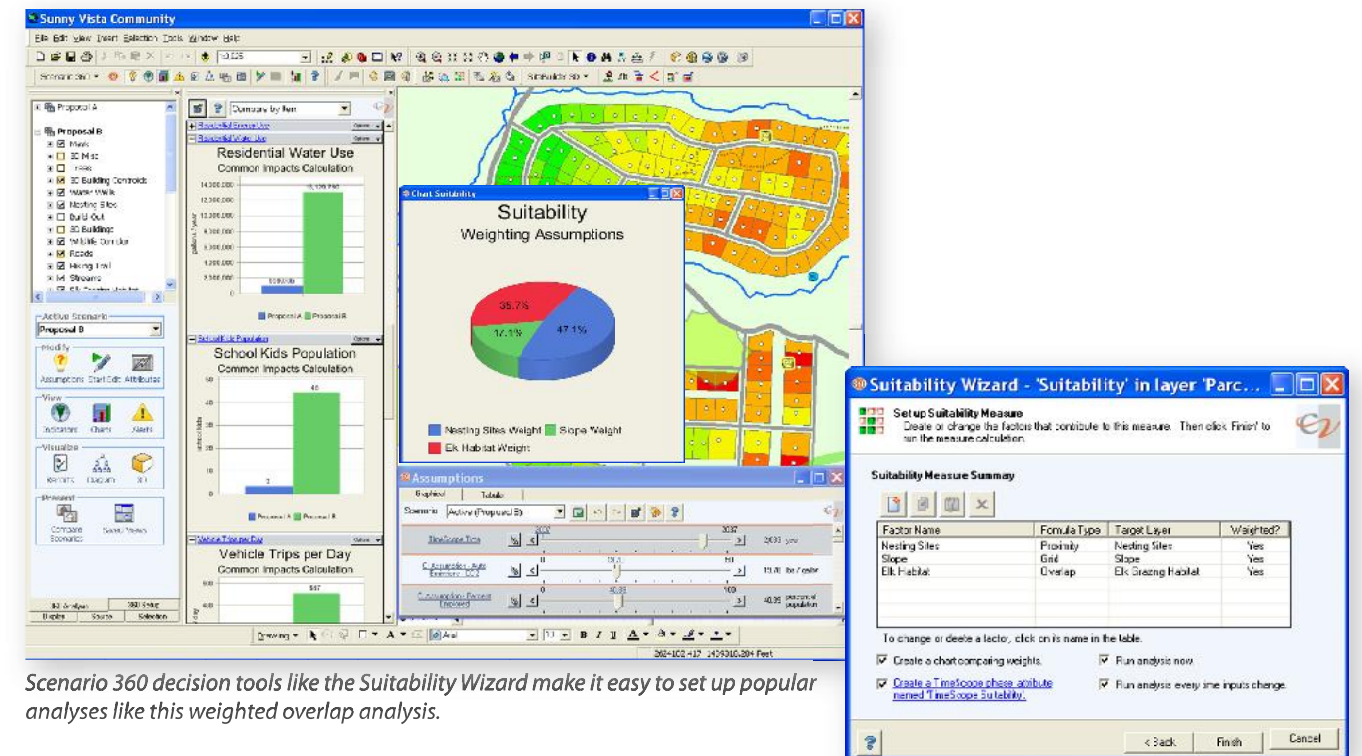
Optimizer helps you choose the best combination of features to satisfy certain goals, such as which parcels to conserve given a finite conservation budget. Its advanced, super-fast Modified Simplex Method algorithm allows you to work with large numbers of features in short times, even on an ordinary desktop computer.



(Allocator and Optimizer are premium features that are only available with CommunityViz - Professional.)

DECISION TOOLS

A collection of tools included in CommunityViz



Scenario 360 decision tools like the Suitability Wizard make it easy to set up popular analyses like this weighted overlap analysis.

Easy-to-use wizards explain what to do - no formulas required.

For more information

and video demos
www.placeways.com

Placeways, LLC
1.866.953.1400
www.placeways.com
info@placeways.com

communityviz®

Including Scenario 360™ and SiteBuilder 3D™



from **placeways**

and **ORTON FAMILY FOUNDATION**

CommunityViz Scenario 360™ includes wizards and “decision tools” for popular geographic decision-making applications like these:

- Build-Out
- Suitability
- Common Impacts
- TimeScope™
- Allocator
- Optimizer

(Not all tools are available with all packages.)

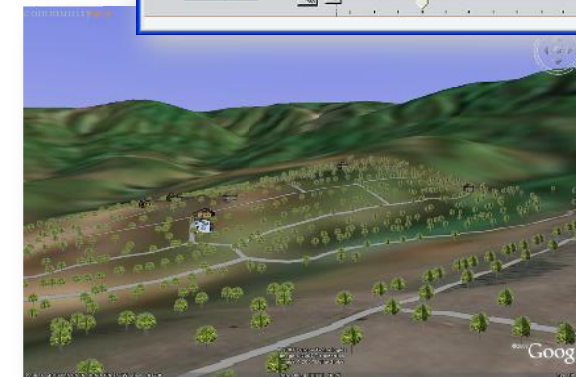
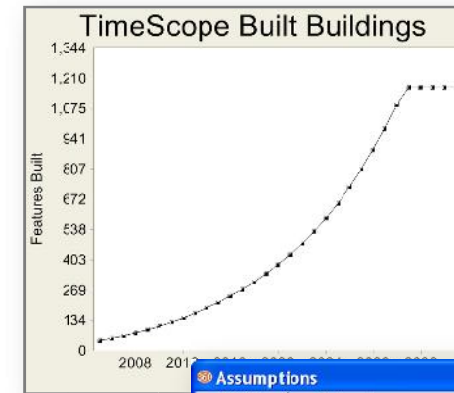
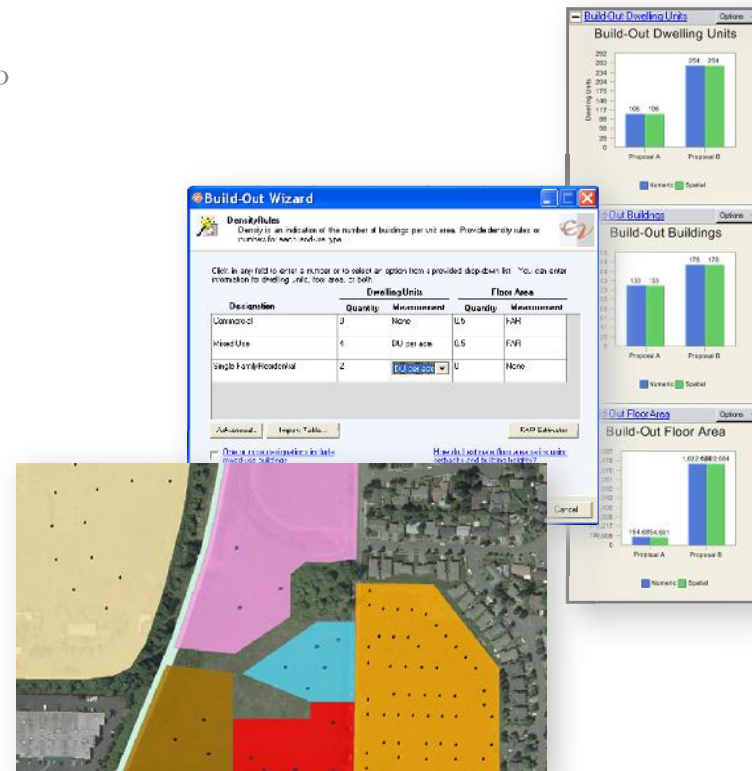


Build-Out Wizard

Performs a complete classical build-out analysis to estimate the building capacity of your land.

Works with everything from a simple land-use map to complex zoning codes – include as much or as little data as you want. Build-out types include:

- *Numeric* calculates the number of buildings based on density, building constraints and other factors
- *Spatial* suggests the location of future building points using density and set-back rules
- *Visual* helps set up for creating 3D models of the future development.



TimeScope™

The slider bar for time - lets you show and study changes year by year.

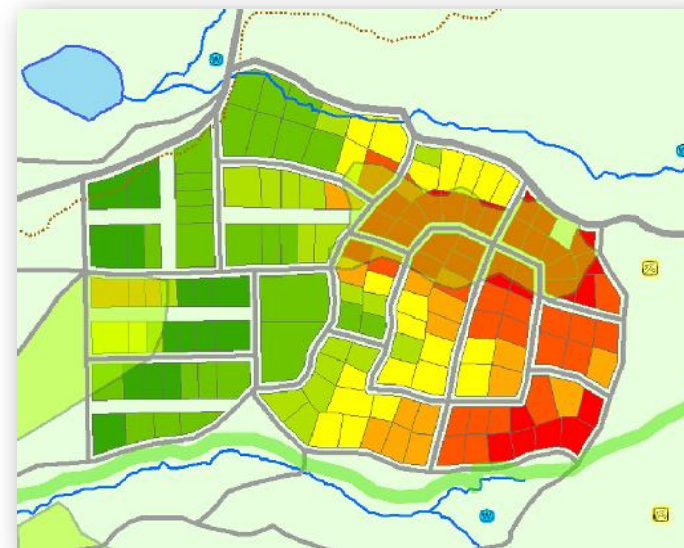
Buildings and roads appear on the landscape; infrastructure capacity fills up; land-uses change; and impacts update – all according to rules and assumptions you set. Results can even be used with the Timeline in Google Earth™.

Suitability Wizard

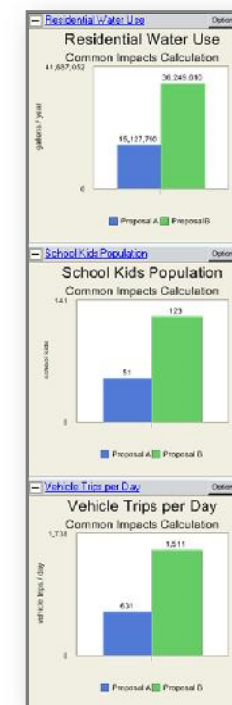
Rates locations based on their suitability or desirability for a particular purpose.

Suitability Wizard lets you create site suitability or desirability analyses via an easy-to-use, step-by-step wizard. Just specify the factors you want to consider - like proximity to roads and overlap with floodplains, for example - and the wizard sets up a complete analysis for you.

Once the analysis has been created, you can color code your map according to which sites are most suitable, and you can dynamically change the weighting of each factor and see the results.



In this example parcels are scored from 0 – 100 (red – green) based on their suitability for building. Changing the weighting factors causes an immediate recalculation for each parcel and recoloring of the map.

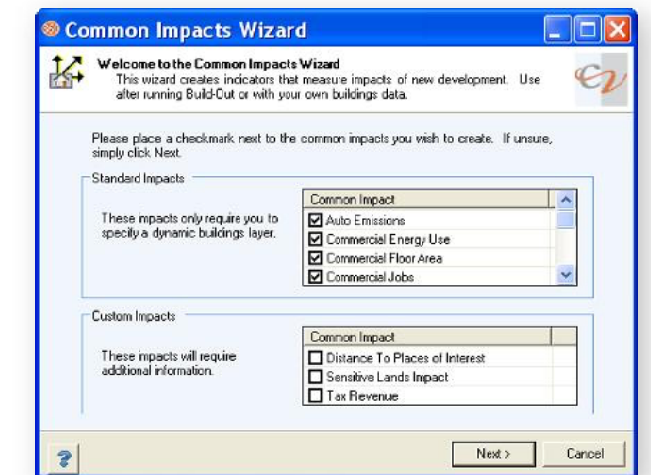


You can instantly start to see some of the most commonly used indicators of economic, environmental, and social outcomes associated with alternative growth scenarios. The analyses created include everything you need: formulas, indicators, charts, reports, and variable assumptions with default values to serve as a starting point.

- Labor force
- Population
- Residential dwelling units
- Residential energy use
- Residential tax revenue
- School children
- Sensitive lands impacts
- Vehicle trips per day
- Auto emissions
- Commercial energy use

Common Impacts Wizard

Automatically creates GIS-based impact analysis based on projected growth.



- Commercial floor area
- Commercial jobs
- Commercial jobs-to-housing ratio
- Commercial tax revenue
- Distance to places of interest
- Residential water use