

communityviz[®]

Exploring Your
CommunityViz
Version 4.2 Upgrade



Exploring Your CommunityViz Version 4.2 Upgrade
Document version 1.0

Copyright © 2012 Placeways, LLC
All Rights Reserved.
Printed in the United States of America.

ArcGIS and *ArcMap* are trademarks or registered trademarks of Environmental Systems Research Institute, Inc. Trademarks and copyrights for the *CommunityViz*, *Scenario 360*, and *Scenario 3D* software packages are owned by Placeways LLC.

Introduction to CommunityViz Version 4.2

CommunityViz® Version 4.2, including Scenario 360™ and Scenario 3D™, is the newest update to CommunityViz software for planners. This version expands and improves the capabilities of Version 4.1 with features that take advantage of new capabilities in ArcGIS 10.0 to provide an improved user experience that includes

- New charting platform
- Updated sketch tools
- System-wide updates and refinements to existing capabilities

This short guide, intended for people who are already using CommunityViz 4.1, provides a tour of the major new features available in Version 4.2. As always, detailed, context-sensitive help is available within the software itself to answer specific questions.

New Charting Platform

Visually appealing & technologically robust

Version 4.2 introduces an all-new platform for Scenario 360 charts that makes them modern looking, more flexible, and more robust than ever before.

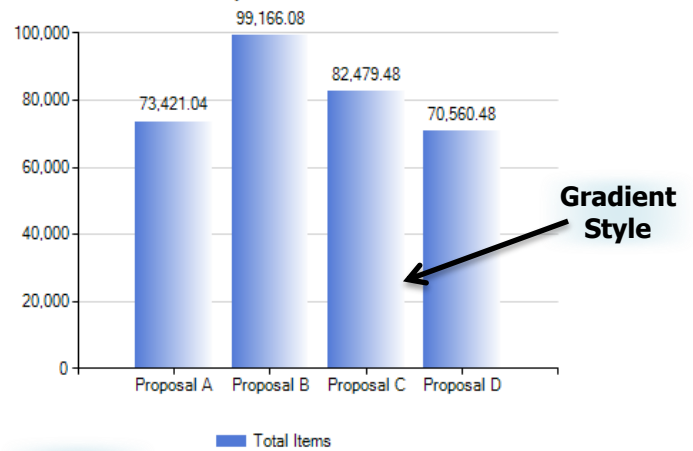
The new charts are built on the **Microsoft standard platform** which is the same chart platform used in ArcGIS. The charts offer the same great functionality as charts in version 4.1 and add some new features. The platform is more robust and lays a foundation for continued updates and improvements in the future.

Increased **formatting options** for chart series are available including a gradient pattern which is the new default style for bar charts. **Smart labels** have been implemented to improve the placement and relative position of chart labels. **Auto Axis** generates the axis values on the fly as charts are created and modified. This option can be checked off and manual values can be inserted if you desire.

There is also a new chart type: **Stacked Charts**. Stacked Charts allow you to display related data in a more compact format. You can look at ratios, totals, or other measures all stacked on top of each other in a single bar and then compare these across scenarios or to other items. The result is less visually cluttered while displaying complex information and comparisons.

Quick Start: Chart type, color, and display values can be changed in Chart Properties accessible from the View Charts window. Full chart settings can be edited in the Edit Chart window accessed by going to the **360 Setup tab > Charts**.

Custom Impacts Calculation

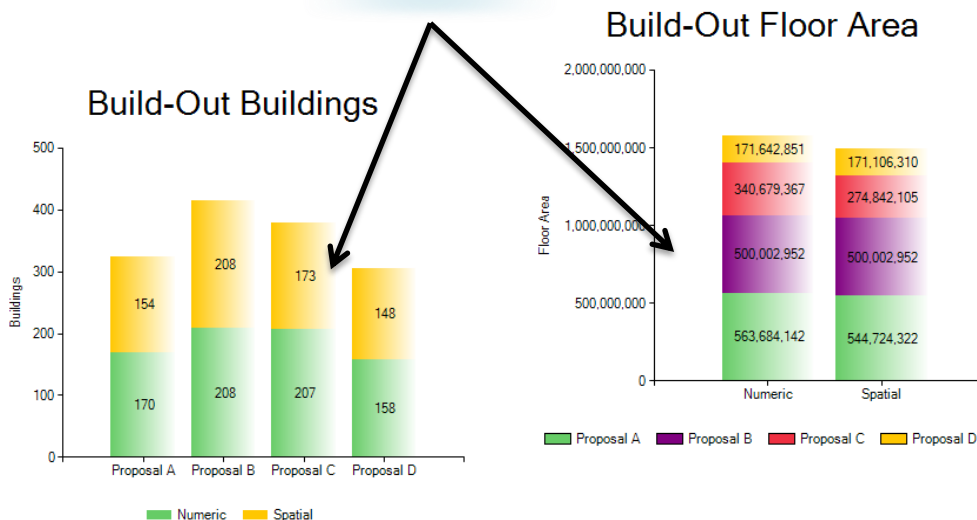


Stacked Type

Set Gradient Pattern

Auto Axis Option

Introducing Stacked Charts



Enhanced Sketch Tools

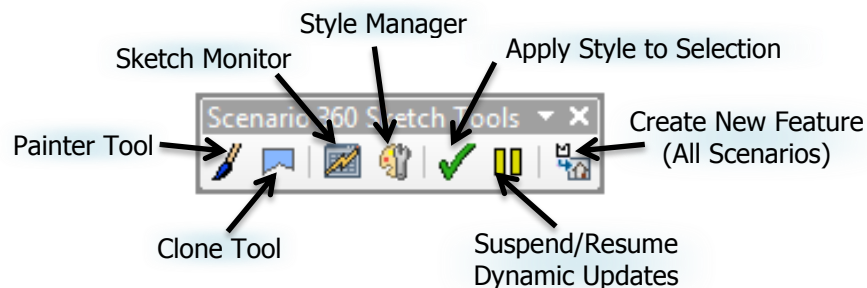
Tighter ArcGIS 10 integration for easier use

With enhanced Scenario Sketch tools, CommunityViz improves its geodesign capabilities by seamlessly integrating with existing ArcGIS templates and increasing design efficiency with an accessible workflow.

CommunityViz styles and ArcGIS feature templates are now linked! This means that if you create a new style in the Style Manager, a feature template is automatically created in ArcMap's Feature Editing window and vice versa. The styles and feature templates are kept in sync as you edit the default values in one or the other. Furthermore, selecting a style in the Style Manager will automatically select the corresponding feature template, making it possible to work primarily in Scenario 360's Style Manager or ArcMap's Feature Editing window, or a combination of both.

The Style Palette is now integrated into the **Style Manager**. All functionality found in the former Style Palette is now accessible through the Style Manager and/or the Sketch Toolbar. You can use the Style Manager to manage attributes, symbology, and clone shapes for all your styles.

The **Scenario 360 Sketch Tools toolbar** has been redesigned with seven buttons to improve sketch workflow and management.

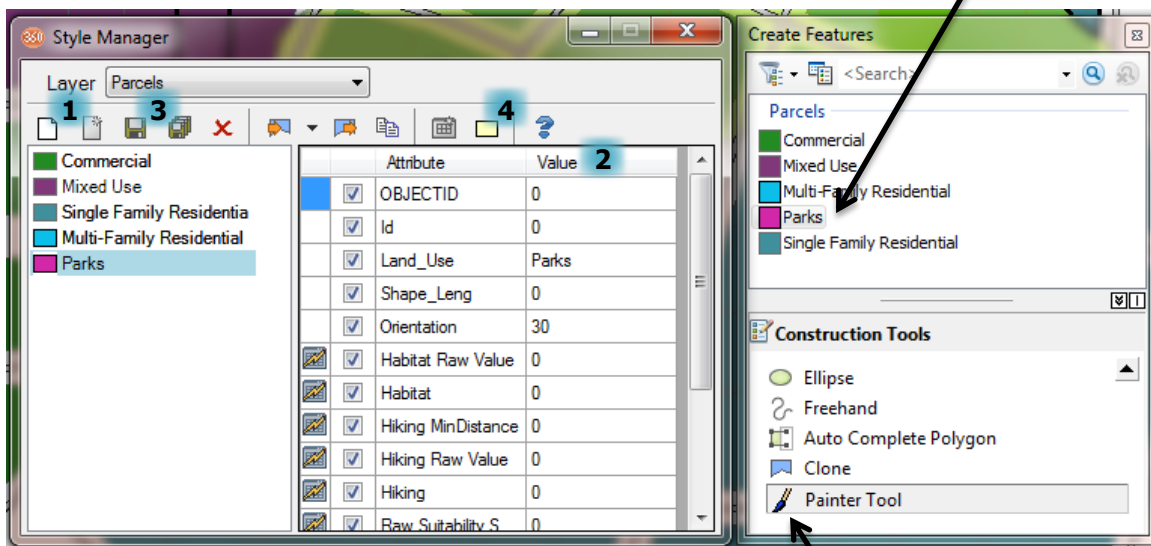


Creating a new style is simple and straightforward:



1. Define the name of the style
2. Assign desired default values to static attributes
3. Save the style
4. Apply symbology to the style

This generates both a new style and a new feature template.

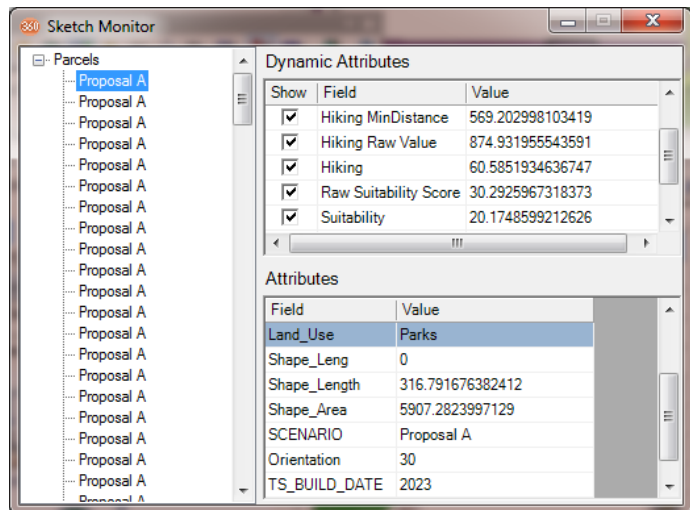
An ArcGIS feature template is automatically generated when you create a new style



The Painter and Clone Tools are accessible in the ArcMap Construction Tools window

Applying a style to features is even easier. The **Apply Styles to Selection**  button is now easily accessible on the Scenario Sketch Tools toolbar, and the Painter and Clone tools are both available on this same toolbar as well as in ArcMap Construction tools. Likewise, the **Suspend/Resume Dynamic Updates**  button is now found on this toolbar.

The **Sketch Monitor**  has also been updated. Now, when you click a feature listed on the left window of the Sketch Monitor, the corresponding feature flashes on the map so you know which feature's attributes you are viewing.



Note: Migrating sketch styles from earlier versions

When you open an analysis created in an earlier version of CommunityViz, CommunityViz 4.2 will create links between CommunityViz styles and ArcMap templates. If any layers in your analysis have a style and a template with different names but matching attribute values, duplicate styles will be created, one with each name. A feature template will be made for each style and a style will be made for each feature template. You can delete one of these double entries from either the Style Manager or the ArcMap Create Features window; the corresponding style or template will also be deleted. If a layer has both a template and style, but the names are the same, duplicate entries will not be created.

Plus...

In addition, look for these upgrades and improvements:

- Enhancements for **NetworkMinDistance** and **NetworkGetFromClosest** functions—new parameters have been added to allow you to specify a study area/search distance
- Updates to Windows 7 user interface for the wizards
- Updates to Common Impacts default assumption values using the latest available national references
- Attribute units and decimal places included in template export
- Updates to Analysis Viewer
- General updates for wizards, functions, and interface

As always, **up-to-date Help documentation** can be found online or throughout your new CommunityViz 4.2.

We hope you enjoy the new CommunityViz Version 4.2!